



Rotherhithe Street, London, SE16 5UD

A unique two bedroom apartment located in sought-after Rotherhithe riverside development, enjoying stunning views of the Thames and London skyline. The apartment boasts a spacious and bright open plan reception room and modern kitchen with plenty of storage and space to dine which overlooks The River Thames and London skyline, a stylish family bathroom, and two spacious bedrooms with one boasting access to a private balcony. Additional storage can be found in the hallway. The property is surrounded by many local amenities including bars, outdoor gym, cafe, pubs, the greenery of Stave Ecological Hill and direct quick ferry access to Canary Wharf and good bus links.

- Two bedroom Spacious Apartment
- Secure Parking Space
- Water Bills Included into The Rent
- Private Balcony
- Tennis Court on Sight
- Good Transport Links
- Stunning Thames and London Skyline View
- Access to Rotherhithe Street and plethora of Local Amenities
- Plenty of Storage / Laundry Room
- Shared Courtyard Garden

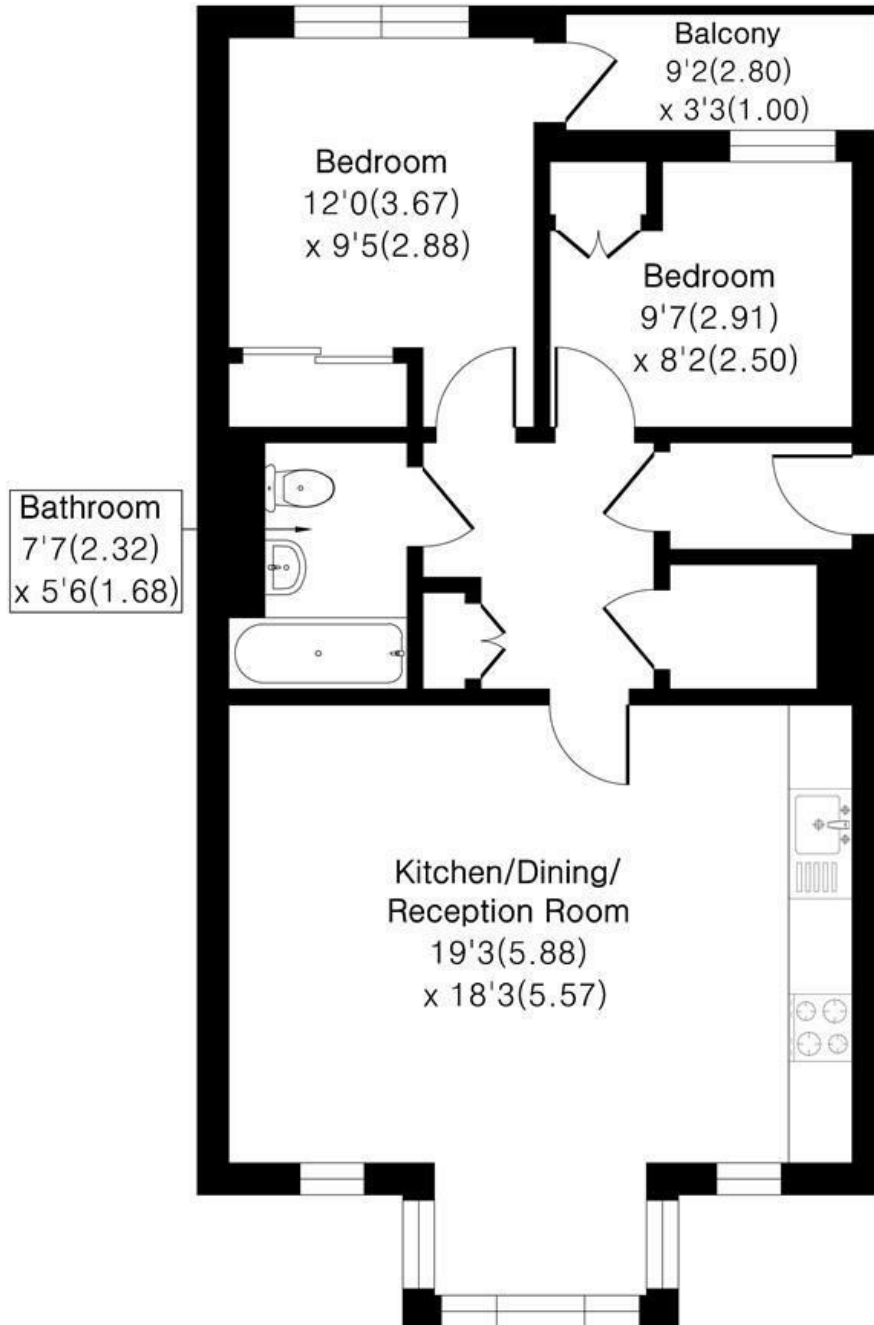
£2,250 Per month

Alex & Matteo
ESTATE AGENTS



Tivoli Court SE16

Approximate Area = 665 sq ft / 61.8 sq m



Alex & Matteo
ESTATE AGENTS

Floor plan Produced in accordance with RICS Property Measurement 2nd Edition, Incorporating International Property Measurement Standards (IPMS2 Residential). Produced for Alex & Matteo Estate Agents.

Energy Efficiency Rating		
	Current	Potential
Very energy efficient - lower running costs		
(92 plus) A		
(81-91) B		
(69-80) C	74	80
(55-68) D		
(39-54) E		
(21-38) F		
(1-20) G		
Not energy efficient - higher running costs		
England & Wales		
EU Directive 2002/91/EC		